



HDC tee ingot

Shapes/Forms:

HDC Tee Ingots

Weight: 885 kg

Dimensions: 1,500 mm x 880 mm x 290 mm
(length x width x height)

Weight: 500 kg

Dimensions: 850 mm x 880 mm x 290 mm
(length x width x height)

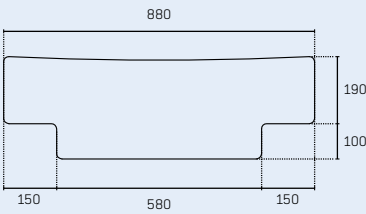
Alloys:

A 356.2, AlSi7Mg, AlSi9Mg, AlSi10Mg,
AlSi11Mg, Silafont 36 (available in both
Sr modified and unmodified)

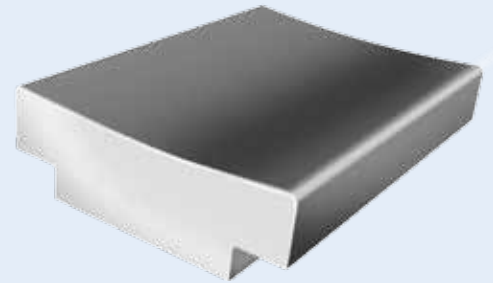
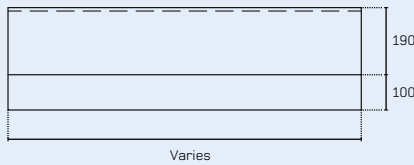
Packaging:

Convenient for fork-lift handling.

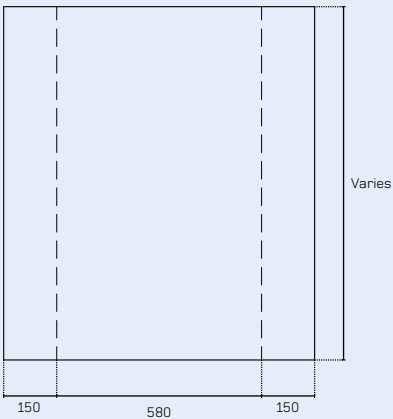
Front view



Side view



Plan view



SC No. Marketing
(Stencil one side)

Piece No.
(Handwritten one side)

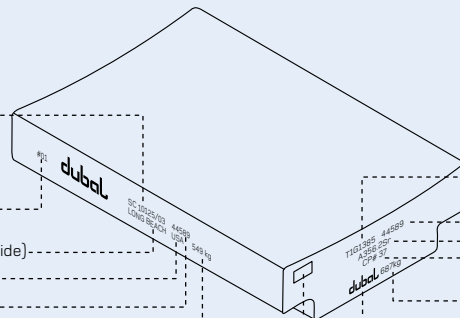
Destination (Stencil one side)

Country (Stencil one side)

Alloy stamp

Piece weight
(Handwritten one side)

Weight ticket



Cast No. (Engraved)

Alloy stamp (Engraved)

Alloy code (Engraved)

Cast piece No. (Engraved)

Piece weight kg (Engraved)

DUBAL (Engraved)

NOTE: All dimensions are approximate.